



**TYRONE**

# PRECAST CONCRETE

## PRODUCT CATALOGUE

At Tyrone, we manufacture a wide range of Precast Concrete Solutions for the Construction, Commercial Builders, Mining, Oil and Gas, Industrial and Civil Sectors.

[www.tyronegroup.com.au](http://www.tyronegroup.com.au)



## INTERLOCKING BLOCKS



600 x 600 x 600



800 x 800 x 400



800 x 800 x 800



1200 x 600 x 600



1600 x 800 x 800  
4 With Fork Slot



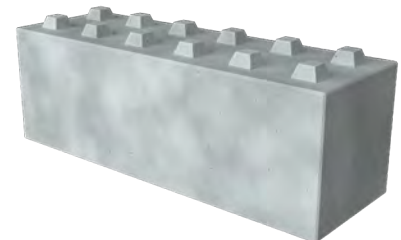
1200 x 800 x 800



1600 x 800 x 400



1600 x 800 x 800



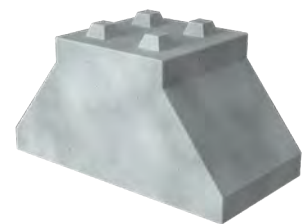
2400 x 800 x 800



1600 x 800 x 800  
Step Flat



1600 x 800 x 800  
4 Stud Step



1200 x 800 x 800  
Base Block

## INTERLOCKING BLOCKS



**750 x 500 x 500**



**1500 x 500 x 500**



**1500 x 500 x 500  
Left side**



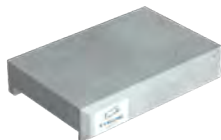
**1500 x 500 x 500  
Right side**



**4 Pole Fork Slot**



**1200 x 600 x 300  
Flat**



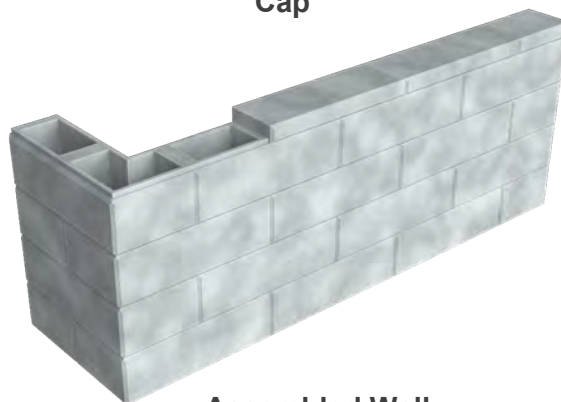
**750 x 500 x 150  
Cap**



**1500 x 500 x 150  
Cap**



**350 x 350 x 1000  
Plain Block**



**Assembled Wall**

## INTERLOCKING L AND T WALLS



**2800 x 1900 x 1500**



**4000 x 1900 x 1500**



**5000 x 1900 x 1500**



**T-Bloc**  
**3000 x 2000 x 1100**

## INTERLOCKING L WALLS



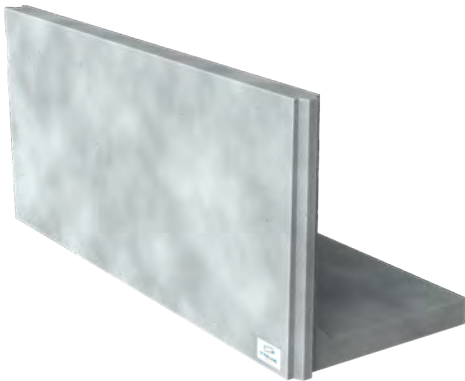
1200 x 1200 x 2000



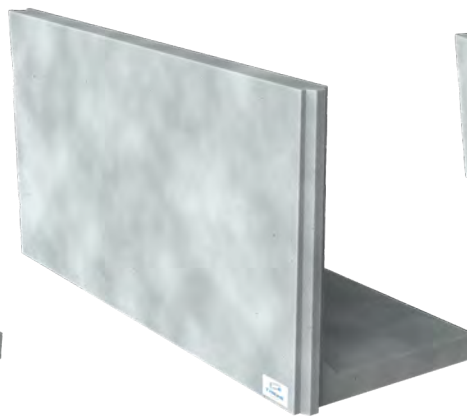
1000 x 1200 x 3000



1200 x 1200 x 3000



1400 x 1200 x 3000



1600 x 1200 x 3000



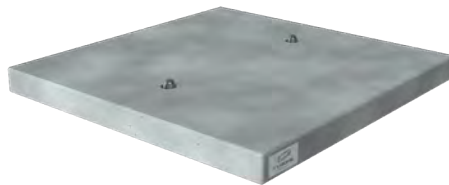
1000 x 1000 x 4000



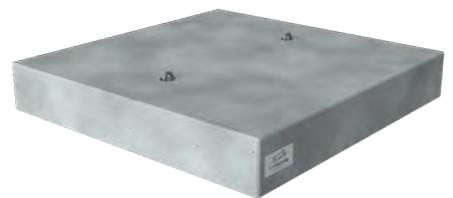
## HARD STANDS, MODULAR FLOORS



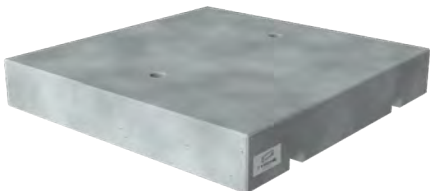
**Hardstand Slab**  
**2000 x 2000 x 150**  
**Lifting**



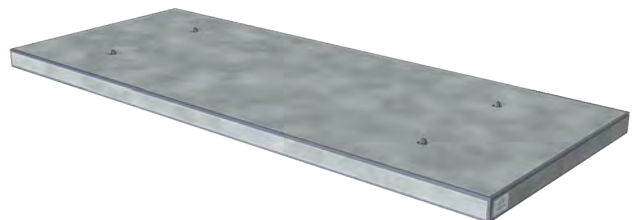
**Hardstand Slab**  
**2000 x 2000 x 160**  
**Lifting**



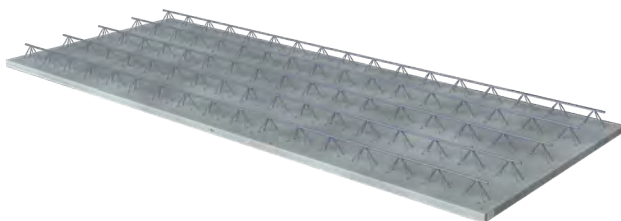
**Hardstand Slab**  
**2000 x 2000 x 320**  
**Lifting**



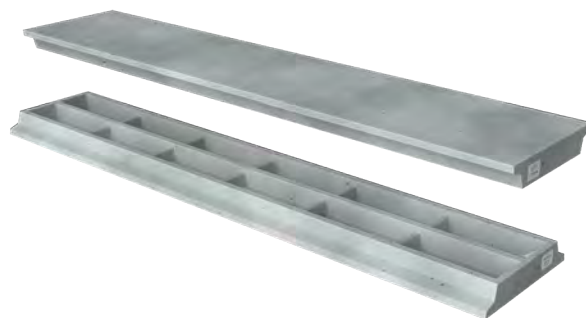
**Hardstand Slab**  
**2000 x 2000 x 320**  
**With Fork**



**Hardstand Slab**  
**6000 x 2400 x 200**  
**Lifting**



**Filigree Slab**  
**6000 x 2400 x 75**  
**(Custom Sizing Available)**



**Tri-Dek**  
**6000 x 1200 x 225**  
**(Custom Sizing Available)**

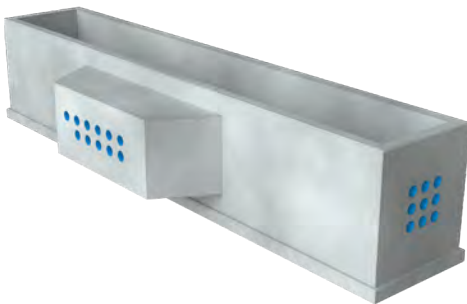
## ELECTRICAL AND COMMUNICATIONS



**Electrical Communications Pit**



**Electrical Communications Pit**



**Electrical Communications Pit**



**Multi-use EL Channel**



**Precast Conduit with 2 pipes**  
4000 x 800 x 500



**Semi-Circle Duct Bank**

## EROSION AND C WALL PROTECTION



**Reef Pyramid**



**Reef Square**



**Tetrapod 1.5T**



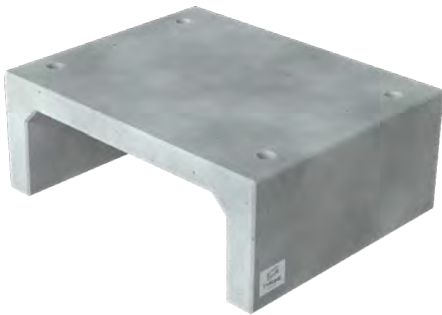
**Tetrapod 1T**



**Tetrapod 3T**



## CULVERTS AND CONCRETE BENCHES



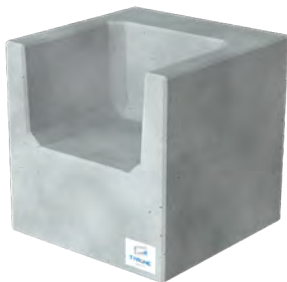
**Culvert**  
**1200 x 450 x 1200**



**Culvert**  
**1200 x 600 x 1200**



**Culvert**  
**1200 x 1200 x 1200**



**Concrete Bench**  
**800 x 800 x 800**



**Concrete Bench**  
**1600 x 800 x 800**



**Concrete Bench**  
**2400 x 800 x 800**

## TIE DOWNS AND TANKS



**Tie Down Block**  
**600 x 600 x 600**



**Tie Down Block**  
**750 x 750 x 750**



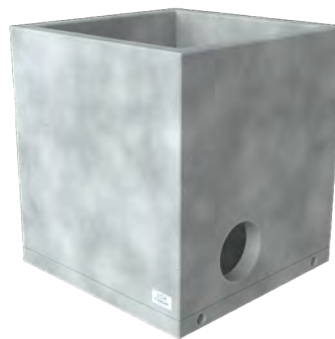
**Tie Down Block**  
**900 x 900 x 900**



**Tie Down Block**  
**1100 x 1100 x 1100**



**Fire tank Double**

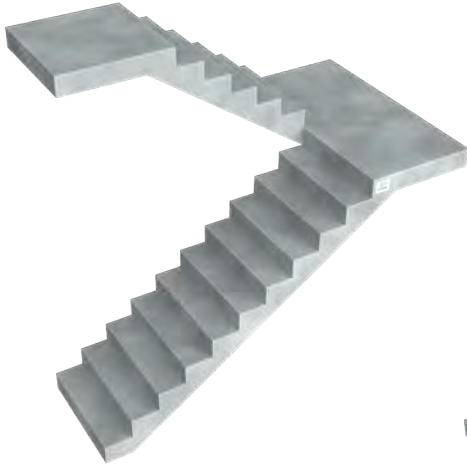


**Fire tank Single**

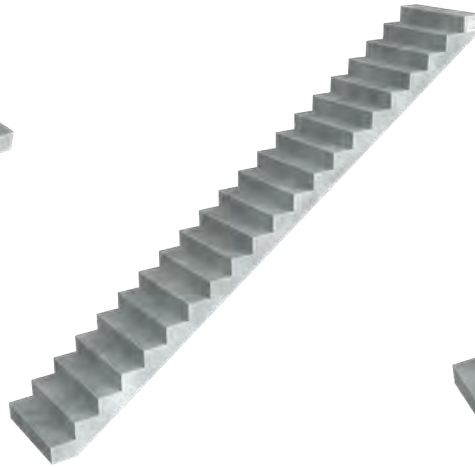


**Water tank**

## STAIRS AND BARRIERS



**Double Stairs  
with Landing**



**Stairs with  
Straight Step**



**Stairs with  
Landing**



**Interlocking Concrete Barrier  
2000 x 540 x 900  
With Fork Slot**



**Interlocking Concrete Barrier  
4000 x 540 x 900  
With Fork Slot**

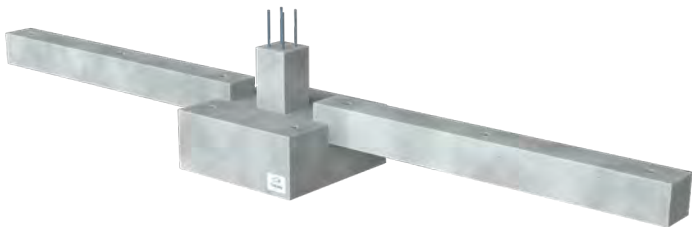
## PRECAST FOOTINGS, COLUMNS & HOLLOW CORE BEAMS



**400 Wide Shell Beam**



**600 Wide Shell Beam**



**Footing Assembly  
With Beam And Base**



**Footing Base Block  
1200 x 500 x 500**

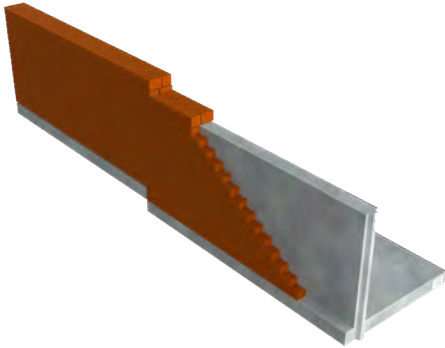


**Footing Base  
Block Assembly**



**Precast Lintel  
100 x 250 x 3000**

## ASSEMBLY



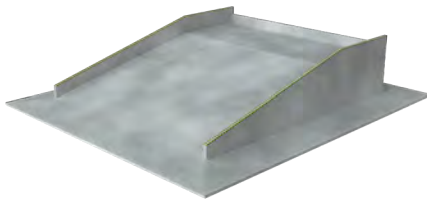
**Brick Façade On  
L Shape Walls**



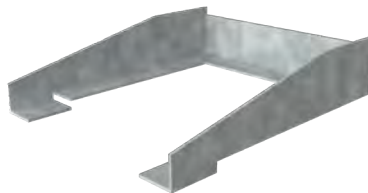
**Double Lift 2 Levels**



**Double Lift**



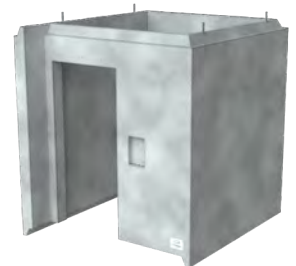
**L Shape Assembly Ramp**



**L Shape Assembly**



**Single Lift 2 Levels**



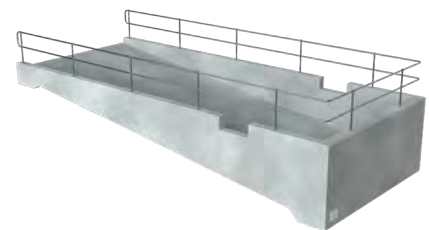
**Single Lift**



**Tank with stairs**



**T-Wall Undercroft Assembly  
(Multiple Configurations Available)**



**Wash Pad sump**

## MISC



**Precast Kerbs**  
(Custom Sizing Available)



**Wheel Stop 1000**



**Wheel Stop 2000**



# THE POWER OF PRECAST CONCRETE PRODUCTS

Enhancing Construction Efficiency and Quality in the ever-evolving construction industry, finding innovative solutions that enhances efficiency, durability, and cost-effectiveness is crucial.

Precast concrete products have emerged as game-changers, revolutionising the way we build structures. With their numerous benefits and unparalleled versatility, precast concrete products have become a go to choice for architects, engineers, and contractors.

# PRECAST PRODUCTS BENEFITS

- ✓ Unmatched Quality and Durability
- ✓ Enhanced Construction Speed and Efficiency
- ✓ Cost Effectiveness
- ✓ Sustainability and Environmental Benefits

### Notes:

[illegible]

This catalogue features our standard products.  
Custom sizes are also available upon request.

# TYRONE



**TYRONE**

📍 42 Paramount Dr, Wangara, WA

☎ 08 9240 5020

✉ [sales@tyronegroup.com.au](mailto:sales@tyronegroup.com.au)