



TYRONE[®]

PREFABRICATED MASONRY



Introduction

Introducing Prefabricated Masonry Construction to the Australian Market

Prefabricated masonry has a rich history, with early innovations dating back over a century. Over the past 40 years, Germany has pioneered commercial processes and refined methodologies, making prefabricated masonry a widely adopted construction method across Europe and parts of Asia.

In Australia, Tyrone has spent the last three years collaborating with a German prefab masonry specialist, Australian engineers, and a local masonry manufacturer to develop a prefabricated masonry system that fully complies with Australian Building and Safety Standards.

In January of this year, Tyrone's Prefabricated Masonry Wall Construction and Lifting Procedures received full Australian approval, marking a major milestone in modern construction methods.



Key Benefits

➤ **Weather-Proof Production**

Masonry is manufactured under cover, eliminating weather-related delays.

➤ **Non-Linear Construction**

Unlike traditional methods where trades work in sequence, prefabricated masonry allows construction of walls to begin even before site earthworks or foundations, significantly accelerating project timelines.

➤ **Superior Quality Control**

Panels are produced in a controlled factory environment under strict quality and safety protocols, ensuring consistent and high-quality results.

➤ **Safer Work Environment**

The use of moving scaffolds and integrated lifting systems eliminates heavy lifting and reduces onsite hazards. Operators work in a dedicated area without interference from other trades.

➤ **Reduced Dependence on Skilled Trades**

In Germany, structural masonry walls are built using semi-autonomous machinery. Tyrone will commission similar equipment in Australia next year, enabling workers to be trained in just two weeks—compared to the 3–4 years required for a traditional bricklaying apprenticeship.

➤ **Unmatched Productivity**

The machinery can run in multiple shifts, including at night. Two minimally trained operators can produce the output of up to 12 skilled tradespeople in a standard 8-hour shift.

How It Works?

Instead of building masonry walls on-site using traditional bricklaying methods, blockwork walls are constructed off-site in a manufacturing environment using specialised plant and equipment.

Once completed, the prefabricated walls are transported to the construction site and lifted into place.

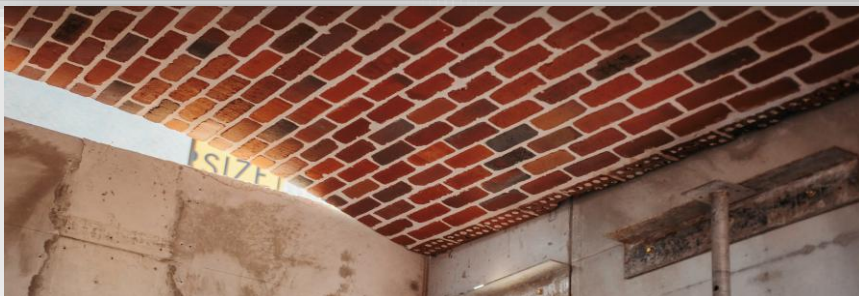
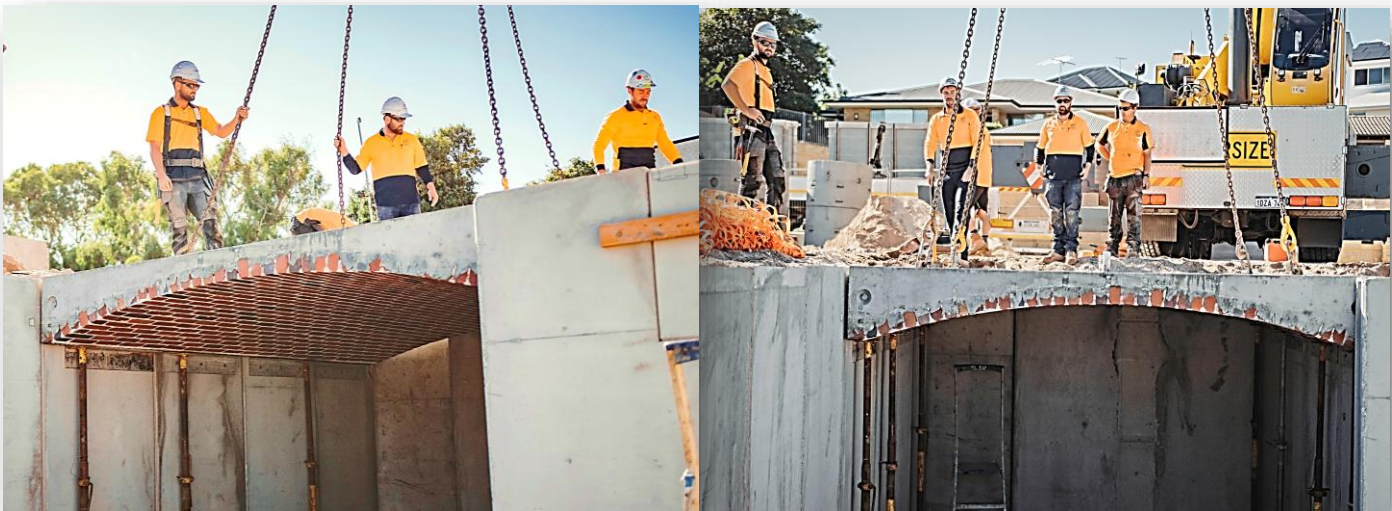


Recent Milestones

Tyrone recently completed a three-level residential structure using this innovative prefabricated masonry system.

The Sandstone Project will be Australia's first commercial development built using prefabricated masonry walls. Remarkably, the ground floor blockwork is already complete, even though no foundations have yet been poured, demonstrating the speed and efficiency of this construction method.

Tyrone is proud to introduce these advanced construction methodologies to the Australian market, paving the way for faster, safer, and higher-quality building practices.



Prefabricated Wall Lift Video 1



Prefabricated Wall Lift Video 2



Redefining the Construction Experience



TYRONE®

Address: 42 Paramount Dr, Wangara, WA

Tel: 08 9240 5020

Email: sales@tyronegroup.com.au